



KENARI DJAJA
SINCE 1965
We provide more than security

FRAMELESS GLASS AND MOVABLE SOUND REDUCING PARTITION



KEND®
The Italian Art of Lock Systems

KENARI PARTISI
Menyekat Secara Memikat

Email: salespartisi@kenaridjaja.co.id

 Foldaside Glass System

Frameless Glass Partition



Project Villa Gua Gong Bali

Product Name : KEND Foldaside Glass System
Available for : 10 / 12 mm tempered glass
Application for : Villa, restaurant, showroom, mall, residential, hotel, bank
Material : Stainless Steel SUS.304
Opening Style : Single & Double Open
Rail & Runner : Coburn ex England

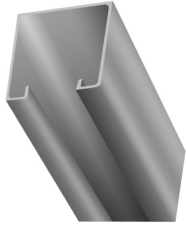
Features

- Modern minimalist
- Clear view
- Maximal opening dimension
- Easy & safety operation
- Easy maintenance

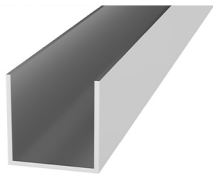
Capacity

Max door width : 800 mm (for 2500 - 2700 mm high) using 2 Hinges
Max door width : 750 mm (for 2700 - 3000 mm high) using 3 Hinges
Max door width : 650 mm (for 3000 - 4000 mm high) using 3 Hinges

Accessories



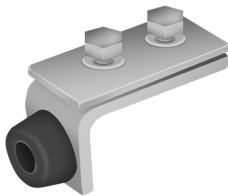
Rel Coburn
3-20/3m
Rel Coburn
3-20/4m



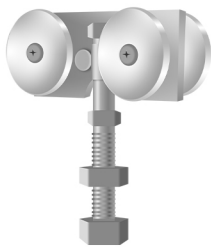
Rel Bawah
AL 400-6m



Breket Atas
3-150



Stopan Rel
400-179



Roda Coburn
3-210



As Roda Bawah Panjang
14 x 106 + Nylon



Project Astra Honda BSD Serpong

Foldaside Glass System



Pivot
8199 T/B - US 32 D



Engsel kaca
8399 T/B - US 32 D



Patch Lock
US 75-20 (FRP) - US 32 D



Striking Box
GK7520 (FRP) US 32 D



Grendel Engsel
G 130/1 US 26



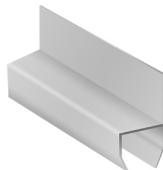
Grendel Kaca
US 7519 - US 26



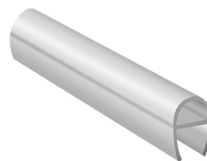
D Proof Strike
(17mm)



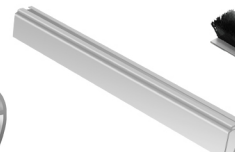
D Cylinder
08510-07



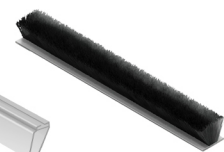
Gasket Glass
(Kipas) GG.75.001



Gasket Glass
(1/2 Bulan) GG.75.010



Gasket Glass
(Bracket Mohair)
GG.75.020



Brush Mohair
GG.75.022



Project Auto 2000 Kelapa Gading Jakarta Utara

Foldaside Glass System ■



Project Masjid AN-NUR Plaza Mandiri, Jakarta



Project Rumah Tinggal, Tanjung Duren Jakarta Barat

Sliding Glass System



Project Showroom BMW Serpong

Product Name : KEND Sliding Glass System
Available for : 10 / 12 mm tempered glass
Application for : Villa, restaurant, showroom, mall, hotel, bank, residential
Material : Stainless Steel sus.304
Rail & Runner : Coburn ex England
Handle : Optional

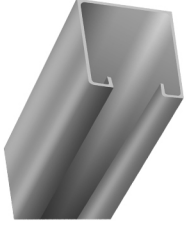
Features

- Modern minimalist
- Clear view
- Maximal opening dimension (without fixed glass)
- Safe space
- Easy & safety operation
- Easy maintenance
- Without bottom rail

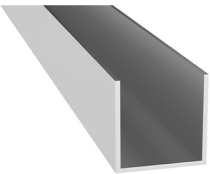
Capacity

Max door weight : 70 kg
Max door height : 4000 mm

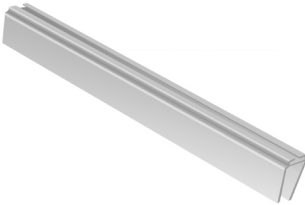
Accessories



Rel Coburn
3-20-3M
Rel Coburn
3-20-4M
Rel Coburn
2-16-3M
Rel Coburn
2-16-4M



Aluminium U



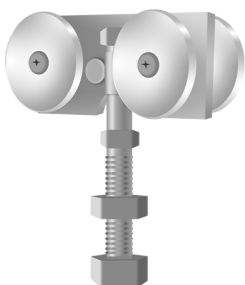
Gasket Glass
(Bracket Mohair)
GG.75.020



Breket Atas
3-150
Breket Atas
2-150



Breket Atas
3-150
Breket Atas
2-150



Roda Coburn
3-207
Roda Coburn
2-207



Project Pacific Place Jakarta

Sliding Glass System



Patch Fitting
PT 1207-US 32 D



Patch Lock
US 1265
+K3 1920 - 40 US 32 D



Striking Box
GK 1265-US 32 D



Striking Box
GK 1265/1
US 32 (glass overlap)



Glass Sliding
GS.61.01-US 32 D



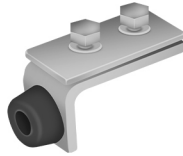
Glass Sliding
GS.61.01-US 32 D



Grendel Kaca
US 7519 US 26



D Cylinder
08510-07



Stopan Rel
400-179



Brush Mohair
GG.75.022



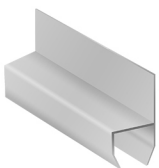
Guide
SL75-104-US 32 D



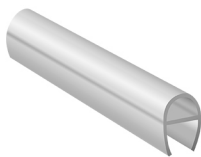
D Proof Strike
(17mm)



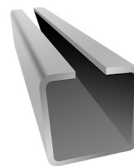
Project Rumah tinggal, Tanjung duren Jakarta Barat



Gasket Glass
(Kipas) GG.75.001



Gasket Glass
(1/2 Bulan) GG.75.010



Rel Atas
KEND 640



Roda Atas
KEND 640



Patch Lock
SL 75-105 - US 32 D

Sliding Glass System ■



Project Rumah Tinggal, Tanjung Duren Jakarta Barat

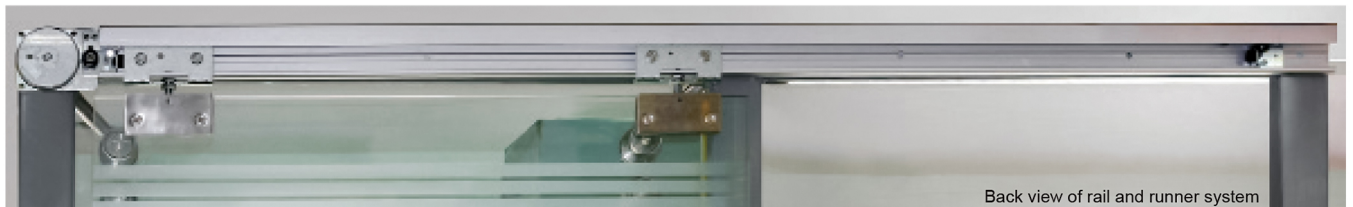


Project Showroom BMW BSD Serpong

■ Semi Automatic Sliding Gear System



Project Rumah Tinggal Sunter Jakarta Utara



Back view of rail and runner system

Application for Frameless glass door with 10 / 12 mm tempered glass

Features

- Automatic closing
- Silent & smooth operation
- Save space
- With damper for smooth closing effect
- Hold open on the full opening
- Left /Right Handed

Technical Data	:
Opening Style	: Single open
Capacity	: Max 70 kg
Width of door	: 650 – 1200 mm
Door overlapped	: 120 mm
Sliding Force	: < 20 N



Project Kopi Kenangan Herritage Senayan City Jakarta

Product Name : KEND Induction Glass System
Available for : 10 / 12 mm tempered glass
Application for : Villa, restaurant, showroom, mall, hotel, bank, residential
Material : Stainless Steel SUS.304
Rail & Runner : KEND / Tachikawa

Features

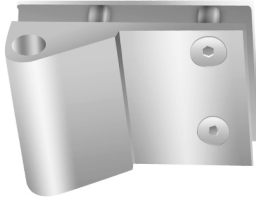
- Modern minimalist
- Clear view
- Maximal opening dimension
- Easy & safety operation
- Easy maintenance
- Stacking system
- Without bottom rail

Capacity

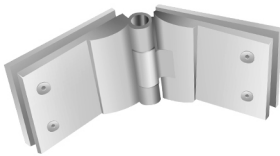
Max door width : 1200 mm
Max door height : 4000 mm

Induction Glass System

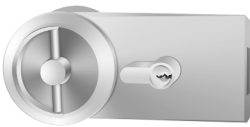
Accessories



Pivot
8199 T/B-US 32 D



Engsel kaca
8399 T/B-US 32 D



Patch Lock
US 75-20 (FRP)-US 32 D



Striking Box
GK7520 (FRP)-US 32 D



Patch Fitting
PT 1207-US 32 D



Rel Atas
KEND 630 (7-43-3m)



Project Rumah Tinggal Kemang Jakarta Selatan

Induction Glass System ■

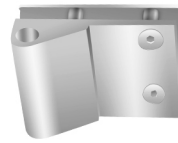


Project Rumah Tinggal Kemang Jakarta Selatan

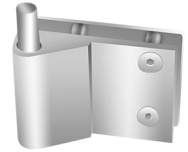
Pivot Glass System



Accessories



Pivot
8199 LH/RH-US32 D



Pivot
8199 T/B-US32 D



Door Closer RA
8510-02



Bracket Door Closer
7505



Bracket Stng DC
70mm x 34 x 20 US 32



D Cylinder
08510-07



Patch Lock
US 7510 (HDL)-US 32



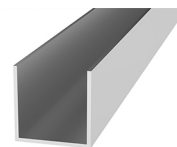
Striking Box
GK 7510-US 32



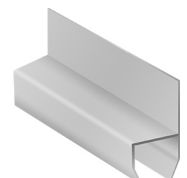
Patch Lock
SL 75-105 - US 32 D



Dust Proof Strike
(0 17 mm)



Dust Proof Strike
(0 17 mm)



Gaset Glass
(Kipas) - GG.75 001

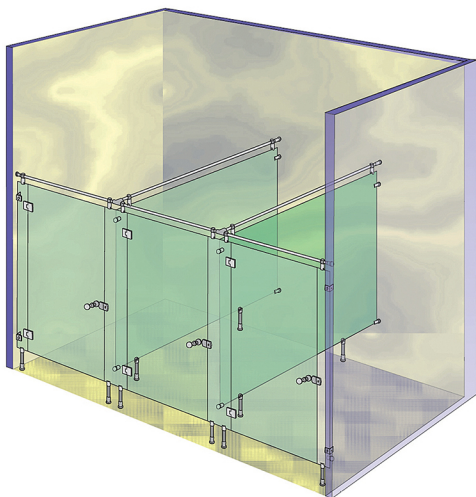


Gaset Glass
(1/2 Bulan) - GG 75 010

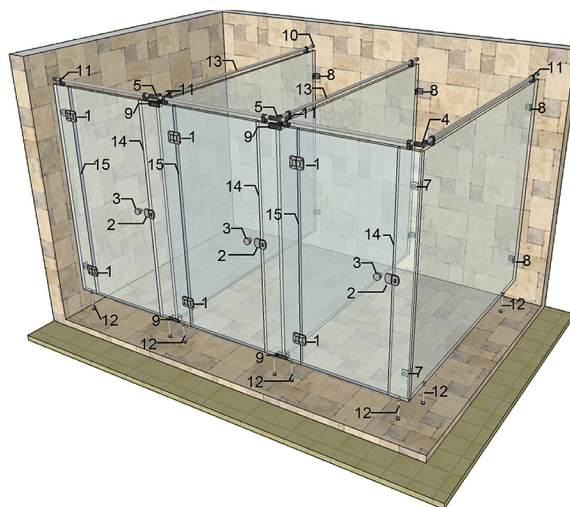


Project Discotique 1001 Hayam Wuruk Jakarta

Wall to Wall

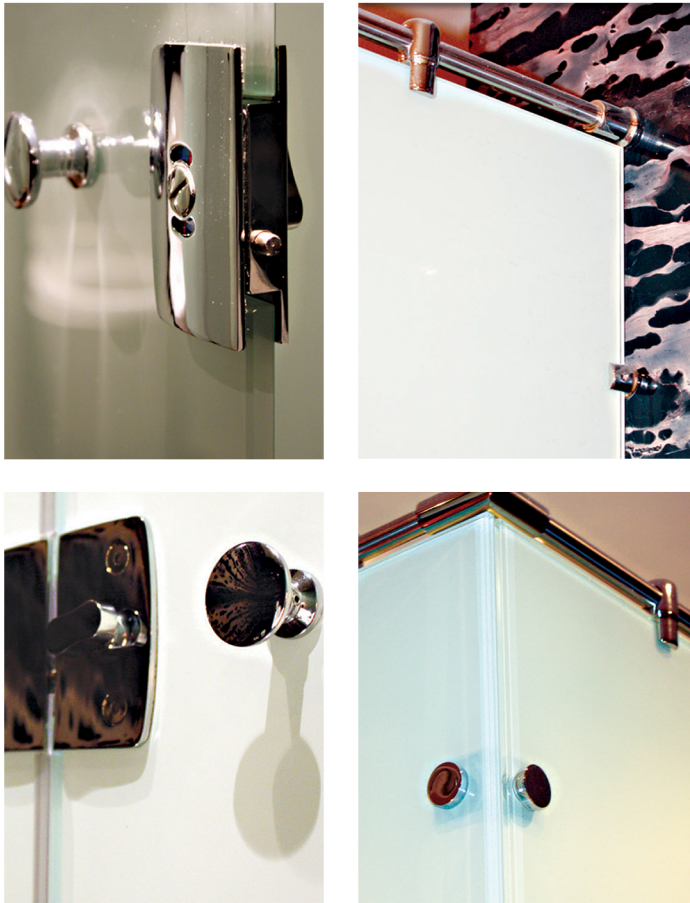


Glass to Wall



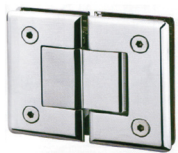
- Standar pemasangan adalah dinding ke dinding
- Pemasangan dinding ke kaca akan diperhitungkan dengan tambah biaya
- Ukuran bisa disesuaikan dengan kondisi di lapangan

Cubical Glass System



Project Discotique 1001 Hayam Wuruk Jakarta

Cubical Component



Shower Hinge
E 572 180° US26



Indicator Lock
DIL A2+B1



Knob
75214-35MM US26



Shower Bracket
SB 109 PP 90° US32



Socket T
ST 19MM US32



Shower Bracket
SB 003 PP



Angular Fitting
AF 75-50/2 90° US26



Angular Fitting
AF 75-50/1 US26



Angular
"T" SS-US32



Shower Bracket
SB101 WP US32



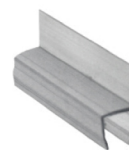
Shower Bracket
SB 102 PG US32



Cubical Bracket
CB 101-S US32



Stainless Pipe
19MM



Gasket Glass
GG.75-001, 2.2M (10MM)



Gasket Glass
GG.75-010 2.2M (10MM)

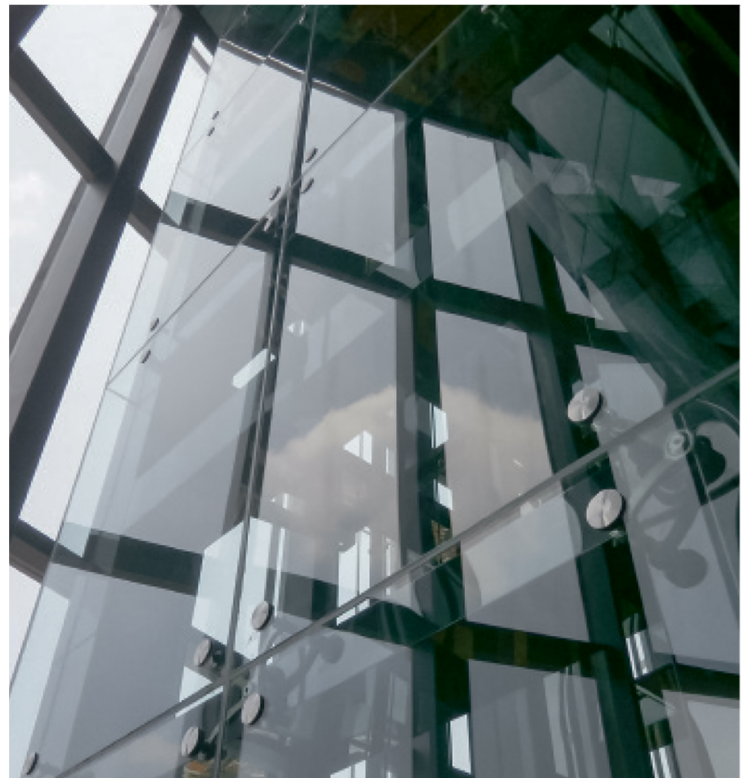
Spider Fitting ■



Project Admiralty Residences, Jakarta



Project Westin Hotel Kuningan, Jakarta



■ Introduction

Movable Sound Reducing Partition



Project Grand Ballroom Sudirman Bandung, Jawa Barat

There are lost of spaces where nothing is as contant as change anda people in the room are face with increasing demands to provide more and different spaces for variety of project. Then new age trend is toward open spaces, where the spaces need to be reconfigured as the encrollment changes. The best solution to use efficient open spaces is to use Movable Sound Reducing Partitions.

For more than twenty years of experience, Kenari Partisi has been the leading prtition manufacturer in Indonesia.

Kenari Partisi of the best movable sound reducing in the market with two years warranty.

Kenari Movable Sound Reducing Partitions are functionally suitable used for banquet room, meeting room, classroom, etc such as in convention center, hotel, school, office, restaurant, entertainment centerchuch and other.



Project Hemangini Hotel Bandung, Jawa Barat

Space Optimization

Kenari Movable Sound Reducing Partitions efficiency and the flexibility usage of a space. A large room be transformed into several small room with minimal set-up time.

Kenari Movable Sound Reducing Partitions can be designed and utilized in a variety of way of opening, losing and stacking suit your needs.

Sound Reduction

Kenari Movable Sound Reducing Partitions made by the highest quality material to delivery the best sound insulation.

Our partitons can reduce to 53,5 dB (type KP325), which had been tested on the PUSLITBANG LIPI

Panel Variance



Telesoping Prtition



Wicked Door Partition



Double Glass Movable Wall



Project Siloam Hospital at Cilandak, Jakarta



Project Hotel Mercure Bandung, Jawa Barat

JW Marriot Hotel, Medan
 Grand Zuri Hotel, Palembang
 Royal Denai, Bukittinggi West Sumatra
 Harrads Hotel, Bali
 Grand Pacific Hotel, Bandung
 Integrity Convention Center, Jakarta
 BPK Penabur School Jakarta
 Institut Tehnologi Bandung
 Atmajaya University, Jogjakarta
 Sampoerna Surabaya
 LNG Tangguh Irian Jaya
 Wisma Taliwang NTB
 Metro Trans Studio Makasar
 Schlumberger, Riau
 Mitra Keluarga Hospital, Depok
 Eka Hospital, Tangerang
 Bappenas Building, Jakarta
 DEPDIKNAS, Jakarta
 DEPHUB, Jakarta
 Gedung PEMDA DKI, Jakarta
 TELKOM Building, Bandung
 DPD Building, Bandung
 Buddha Maitreyawira, West Jakarta
 GKI Guntur, Bandung
 St. Bartolomeus Church, Bekasi
 GBI Intercon, Jakarta
 Parahyangan University, Bandung
 Gereja Katholik St. Fransiscus Xaverius - Bali
 Sahira Hotel - Bogor
 Narita Hotel - Tangerang
 Alium Hotel - Tangerang
 Fiducia Hotel - Tangerang
 Tomoto Restaurant - Surabaya

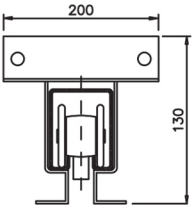
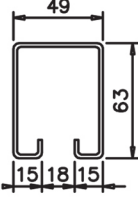

Gereja Bonaventura Pulomas
 Kampus Universitas Airlangga - Surabaya
 Rumah Sakit Lira Medika - Karawang
 Rumah Sakit Sumber Waras - Jakarta
 Rumah Sakit Unggul Karsa Medika - Bandung
 Universitas Jenderal Soedirman - Purwokerto
 Gedung UOB Wahid Hasyim
 Rumah Sakit Mitra Kelapa Gading
 Gedung Dirjen Pajak - Jakarta
 Gedung Mahkamah Agung - Jakarta
 Universitas Trisakti Gedung C - Jakarta
 Sun City Ballroom Hotel - Jakarta
 Universitas Dwijendra - Bali
 Rumah Sakit Siloam - Cilandak
 GKI Perniagaan - Jakarta Barat
 Din Tai Fung Restaurant Puri Indah, MOI,
 dan Surabaya
 Gedung Dirjen Pajak - Jakarta
 Crystal Jade Restaurant - Jakarta
 Gedung Mahkamah Agung - Jakarta
 Discovery Hotel - Ancol Jakarta
 Santika Hotel - Bintaro
 Swiss Bell Hotel - Modernland Cikande
 Grand Aston Hotel - Cengkareng, Medan, dan Bali
 Seruni Hotel - Cisarua Bogor
 Equity Tower - Jakarta
 Sofyan Hotel - Jakarta
 Paragon Hotel - Jakarta
 Optik Melawai Office - Jakarta
 Narita Hotel - Tangerang
 Alium Hotel - Tangerang
 Hilton Garden Inn Hotel - Bali
 Legian Beach Hotel - Bali

Sofitel Nusa Dua - Bali
 Mahogany Hotel - Bali
 Sudirman Grand Ballroom - Bandung
 Mercure Hotel - Bandung
 Grand Tebu Hotel - Bandung
 Quest Hotel - Semarang
 Gedung Bank Indonesia - Solo
 Baron Indah Hotel - Solo
 Royal Ambarrukmo Hotel - Yogyakarta
 Gedung Fakultas Seni Rupa ISI - Yogyakarta
 Sushi Tei Restaurant - Surabaya
 Gereja Sidang Jemaat Kristus - Surabaya
 The Hills Sibolangit - Brastagi
 and many more ...

Stacking System

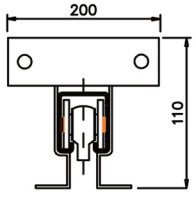
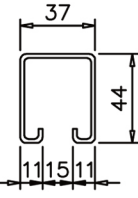


COBURN
 SLIDING SYSTEMS

3-20

TRACK, RUNNER & BRACKET	TRACK	RUNNER	MATERIAL	APPLIED FOR	ALLOWABLE WEIGHT	MAXIMUM HEIGHT
			Track : Galvanized Steel Runner : Ball Bearing Hanger Bolt	Type : KP 320 System Stacking : CENTRE STACKING PARALEL STACKING CURVE STACKING	90 Kg / runner	KP 320 & KP 325 Max 3,5 Meter (1 Runner)


COBURN
 SLIDING SYSTEMS

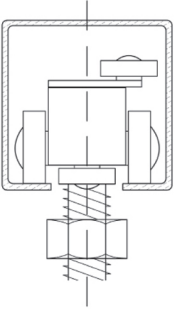
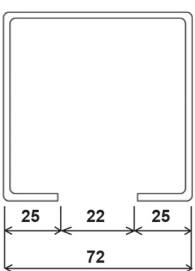

2-16

TRACK, RUNNER & BRACKET	TRACK	RUNNER	MATERIAL	APPLIED FOR	ALLOWABLE WEIGHT	MAXIMUM HEIGHT
			Track : Galvanized Steel Runner : Ball Bearing	Type : KP 320, KP 100 System Stacking : CENTRE STACKING PARALEL STACKING CURVE STACKING	72 Kg / runner	KP 320 Max 3,3 Meter (1 Runner) KP 100 Max 3 Meter (1 Runner)

KEND
620

TRACK & RUNNER	TRACK	RUNNER	MATERIAL	APPLIED FOR	ALLOWABLE WEIGHT	MAXIMUM HEIGHT
			Track : Aluminium Runner : Nylon 49mm Ball Bearing Hanger Bolt	Type : KP 100, KP 320 System Stacking : CENTRE STACKING PARALEL STACKING ORDINARY STACKING INDUCTION STACKING	100 Kg (2 runner)	KP 320 Max 3,5 Meter (2 Runner) KP 100 Max 3 Meter (2 Runner)

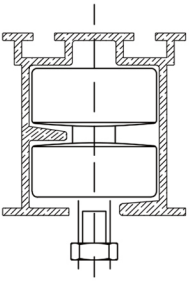
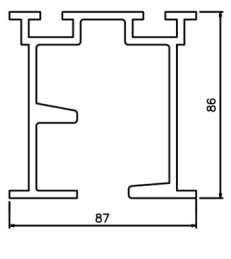

KEND
640

TRACK & RUNNER	TRACK	RUNNER	MATERIAL	APPLIED FOR	ALLOWABLE WEIGHT	MAXIMUM HEIGHT
			Track : Steel Runner : Steel Hanger Bolt 8 Wheel Bearings	Type : KP 325 System Stacking : CENTRE STACKING PARALEL STACKING ORDINARY STACKING INDUCTION STACKING	400 Kg (2 runner)	KP 325 Max. 10 Meter (2 Runner)

Track and Runner Specification ■

KEND

630

TRACK & RUNNER	TRACK	RUNNER	MATERIAL	APPLIED FOR	ALLOWABLE WEIGHT	MAXIMUM HEIGHT
			Track : Alumunium Runner : Nylon 49mm Ball Bearing Hanger Bolt	Type : KP 100, KP 320 System Stacking : CENTRE STACKING PARALEL STACKING ORDINARY STACKING INDUCTION STACKING	150 Kg (2 runner)	KP 320 Max 3,5 Meter (2 Runner) KP 100 Max 3 Meter (2 Runner)

COMPARISON CHART FOR MOVABLE SOUND REDUCING PARTITION

MOVABLE SOUND REDUCING PARTITION TYPE		KP 325	KP 320	KP 100
FUNCTION FOR		Meeting room, Banquet room, etc.	Classroom, Meeting room, Office, Restaurant, Sport Hall, Multifunction Room, etc.	Classroom, Polyclinic room, etc.
SOUND INSULATION AT LAB. TEST		53,5 dB	41 dB	37 dB
PANEL THICKNESS		100 mm	65 mm	50 mm
MATERIALS	Surface Material	Reinforced Material		
		Particle Board	MDF	
	Inside Material	Glasswool / Rockwool (*optional)		
		Paper Roll Core		
	Frame	Aluminium Frame		
Finishing Frame	Natural Anodized			
	Powder Coating (*optional)			
MANUFACTURABLE DIMENSIONS	Minimum Panel Width	900 mm	900 mm	900 mm
	Maximum Panel Width	1200 mm	1200 mm	1200 mm
	Maximum Panel Height	7000 mm	5000 mm	3000 mm
PANEL WEIGHT		± 40 kg/m ²	± 25 kg/m ²	± 20 kg/m ²
STACKING SYSTEM	KEND 620,630 System	Ordinary Stacking, Paralel Stacking, Induction Stacking, Center Stacking		
	COBURN'S System	Centre Stacking, Paralel Stacking, Curve Stacking		
CEILING/FLOOR CONTACTING MECHANISM		Rubber Contact for Ceiling & Floor		
FINISHING PANEL		UNFINISHED PANEL (FINISHING PANEL BY OTHER)		

OUR SHOWROOM



• Graha Mas Kebon Jeruk,
Blok C5-6 Jl. Raya Perjuangan No. 1
Telp : (021) 536 3506



• Jl. Pinangsia Raya 16 B-C
Telp : (021) 690 5280



• Jl. RS. Fatmawati 72/14-15
Cipete (Blok A)
Telp : (021) 720 0630



• Plaza Kenari Mas, GF Blok C
Telp : (021) 3984 2790



Bandung:
Kebon Kawung no. 64 A-B
Telp : (022) 426 6388



Makassar:
Jl. Sulawesi No.201
Telp : (0411) 361 0030



Semarang:
Jl. Agus Salim, Komplek THD Blok C/8
Telp : (024) 356 4254/55



Jogjakarta:
Jl. Magelang KM 1 No.67 Kav. C
Kricak, Tegalrejo
Telp : (0274) 562 312



Denpasar:
Jl. Teuku Umar Barat (Marlboro) No.55
Telp : (0361) 490 678



Gading Serpong:
Ruko Alicante Blok D 12
Jl. Jendral Gatot Subroto, Tangerang

Distributor Resmi :

Surabaya :
ROOMS, Jl. Kedungdoro No. 58 Surabaya
Telp : (031) 531 2000, Fax : (031)546 3888

Lombok :
Athaya Woods Telp : (0370) 630 999



Emergency Service 24 Hours
0811 131 675 (Jakarta) - 0815 4244 3639 (Semarang)



Customer Service
0812 8567 7070 / 0819 0506 7171 (Call/WhatsApp)
021-5367070 / 021-5367171 (Call)

